



It has been a while since our last newsletter – Newsletter 4 was sent at the end of term before the school closed for Christmas. So much has happened since then and our school has changed massively in a very short period of time. Covid-19 caused a second full school closure but there was great relief and excitement when reopened in March, initially for junior infant to 2nd classes and shortly afterwards for 3<sup>rd</sup> to 6<sup>th</sup> classes. The school has done well since reopening in its efforts to keep the virus at bay but constant vigilance and effort are still required by the whole school community.

Our new building has changed life completely for the pupils and staff of the school as they go about their daily activities. A lot of work went on behind the scenes to get safe and manageable systems in place. The boys have really played their part by listening to their teachers and doing what they do best; just getting on with it!

The building programme is on schedule and everything is going well. All going to plan, we hope to be moving into the new building in less than 1 year. Keep an eye on our Twitter page for site photographs which will keep everyone up-to-date with progress.

As this is the first newsletter since we have reopened, I wish pupils, staff and parents all the best for the remainder of the year.

Mr. Kirwan



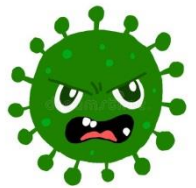
### University Playground – Drop-off & Collections

Please note the following when dropping and collecting at the University Playground:

- Masks must be worn
- No dogs are allowed onto the yard
- Please do not lock bikes to the inside of the yard fence
- Please leave the yard promptly at collection times and ensure children are supervised at all times (boys should not return to the yard once they have left)
- The teachers and Dominic are doing their best to get everyone on and off the yards quickly and safely. Please cooperate with any requests they might make at busy drop-off and collection times

### Covid-19

- Practice good hand hygiene and cough etiquette with children at home – they know all about this from school but reinforcement from parents/guardians will help greatly
- Do not send children to school if they are unwell with common or uncommon symptoms of Covid-19. If a child is unwell during the day, the school has no choice but to contact parents to arrange for collection. Details of Covid-19 symptoms are outlined on the poster accompanying this newsletter
- In the event of any absence from school including if your child is sent home early, you are required to complete the **'Return to School Declaration Form'**. It is important that you complete the declaration before your son's return. This is available to you to complete on Aladdin connect at 3pm on the day of absence. Your cooperation on this would be greatly appreciated
- Masks must be worn by adults on the school grounds
- Please follow public health guidelines - keeping to the advice will allow schools to stay free of Covid-19 and to stay open



### Parent-Teacher Meetings



This year's meetings have concluded. The meetings took place remotely due to restrictions on visitors to schools. If you missed your son's meeting or need to discuss anything with your son's teacher, please make an arrangement through the school office.

## Revised School Calendar

Please see the revised school calendar below which has a number of changes for the remainder of this school year. Please note there is no May mid-term break. The school will only close for one day on Monday 3<sup>rd</sup> May (May Bank Holiday Monday).

School will close for the June Bank Holiday on Monday 7<sup>th</sup> June and will also close on Tuesday 8<sup>th</sup> June. The end of term will now be Friday 25<sup>th</sup> June 2021.

## Has your son Book Rental Scheme books?

It would be worthwhile for all parents/guardians whose children are in the Book Rental Scheme to review the books now.

The conditions of the scheme include that books:

- must be properly maintained.
- cannot be written on, (except in the case of specified workbooks, mainly at the junior end of the school).
- that are lost or damaged must be replaced.



It is easier to do a little upkeep/maintenance now, than to have to pay to replace a book at the end of the year. The cost of the Book Rental Scheme for parents will remain the same for the 2021/2022 school year: €30 for pupils going into Senior Infants and €50 for pupils going into 1<sup>st</sup> to 6<sup>th</sup> Classes. More information on booklists will be issued in the May.

## Standardised Tests 2021

Standardised tests (Drumcondra Test, Micra-T & Sigma-T) will be administered to children in classes from 1<sup>st</sup> to 6<sup>th</sup> in May. The tests look at literacy and numeracy. They are a useful measure of a child's reading and mathematical achievement and they can show a child's progress in those areas. However, the tests are only a snapshot in time and quite specific in what they assess – the results are only part of a much bigger picture and teachers look at the results in that way. Parents should avoid placing undue emphasis on the tests and/or the results of the tests. Great care should be taken not to arouse undue anxiety in children when it comes to the tests and/or their results. Results are shared with parents in the school report for their own information – parents do not have to discuss the results with other parents or with their son(s). Please treat the tests as a very limited measure of how your son is doing in two specific areas regardless of the outcome.

As a large portion of school time has been missed in 2019/2021 & 2020/2021, we expect test outcomes to be affected.

## School Tours

We are planning to run school tours this year. They will be based locally and will be very different to previous years. More details will follow in the near future....



## Sports Day



Sports Day is one of the big occasions for pupils on the school calendar and we are planning to put it back on the calendar again this year. We are making arrangements for both a junior and senior sports day. We are finalising dates and activities and we'll communicate information with parents and pupils when we have everything ready to go.

## Healthy Eating Policy

We encourage children to eat a nutritious lunch. Crisps, chewing gum and glass bottles are not permitted.

"Junk Food" is discouraged. A treat may be included with Friday lunch. Please note that the treat on a Friday should be ONE SMALL ITEM ONLY.



## Sacraments

There have been no dates set for First Communion or Confirmation this year. The parish and school are keen to hold the sacraments before the end of the year but it remains to be seen if it will be possible to do so and the diocese have flagged the potential for some sacraments to be carried over to the Autumn. We will advise parents of pupils in 2<sup>nd</sup> and 6<sup>th</sup> classes of any further developments.



## Graduation

This is an important event in the lives of our 6<sup>th</sup> class pupils and their families. We will hold a graduation ceremony. The provisional date is Wednesday 23<sup>rd</sup> June. Unfortunately, we will have to wait and see what restrictions will remain in place before planning the ceremony. We will be taking a cautious approach while ensuring the contributions and achievements of the boys are celebrated.

## Dates for your Diary

**May Bank Holiday**

Monday 3<sup>rd</sup> May 2021

**June Bank Holiday**

Monday 7<sup>th</sup> & Tuesday 8<sup>th</sup> June 2021

## Maynooth Boys' NS Revised School Calendar 2020 – 2021

| Month    | Date                                   | Day       | Note   |
|----------|--|-----------|--|
| August   | 27 <sup>th</sup>                       | Thursday  | School Re-opens 9.20 a.m. (Senior Infants – 6 <sup>th</sup> Class)               |
| August   | 28 <sup>th</sup>                       | Friday    | Junior Infants start school  |
| October  | 26 <sup>th</sup> – 30 <sup>th</sup>    | Mon – Fri | School Closed <span style="float: right;">Mid-Term Break</span>                  |
| November | 2 <sup>nd</sup>                        | Monday    | School Re-opens 9.20 a.m.  |
| December | 22 <sup>nd</sup>                       | Tuesday   | Close at <b>12.00 Noon</b> <span style="float: right;">Christmas Holidays</span> |
| December | 23 <sup>rd</sup> – 5 <sup>th</sup> Jan | Wed – Tue | School Closed <span style="float: right;">Christmas Holidays</span>              |
| January  | 6 <sup>th</sup>                        | Wednesday | School Re-opens  |
| February | 15 <sup>th</sup> – 19 <sup>th</sup>    | Mon – Fri | School Closed <span style="float: right;">Mid-Term Break</span>                  |
| February | 22 <sup>nd</sup>                       | Monday    | School Re-opens 9.20 a.m.  |
| March    | 17 <sup>th</sup>                       | Wednesday | School Closed <span style="float: right;">Public Holiday</span>                  |
| March    | 26 <sup>th</sup>                       | Friday    | Close at <b>12.00 Noon</b> <span style="float: right;">Easter Holidays</span>    |
| March    | 29 <sup>th</sup> – 9 <sup>th</sup> Apr | Mon – Fri | School Closed <span style="float: right;">Easter Holidays</span>                 |
| April    | 12 <sup>th</sup>                       | Monday    | School Re-opens  |
| May      | 3 <sup>rd</sup>                        | Monday    | School Closed <span style="float: right;">Bank Holiday</span>                    |
| June     | 7 <sup>th</sup>                        | Monday    | School Closed <span style="float: right;">Bank Holiday</span>                    |
| June     | 8 <sup>th</sup>                        | Tuesday   | School Closed  |
| June     | 25 <sup>th</sup>                       | Friday    | Close at <b>12.00 Noon</b> <span style="float: right;">Summer Holidays</span>    |